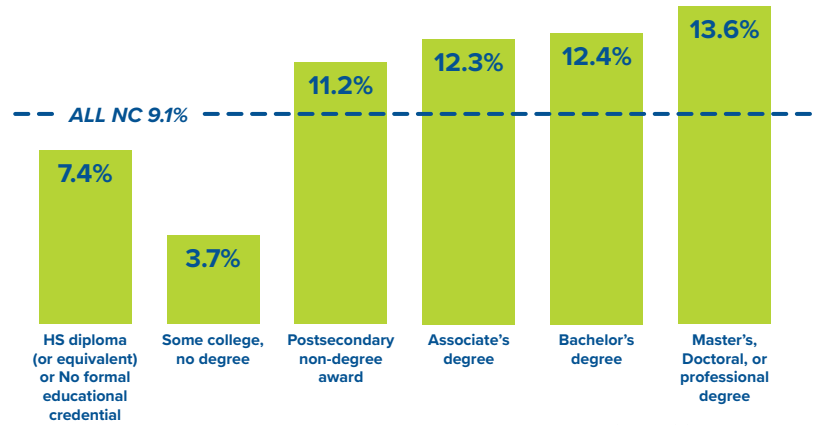


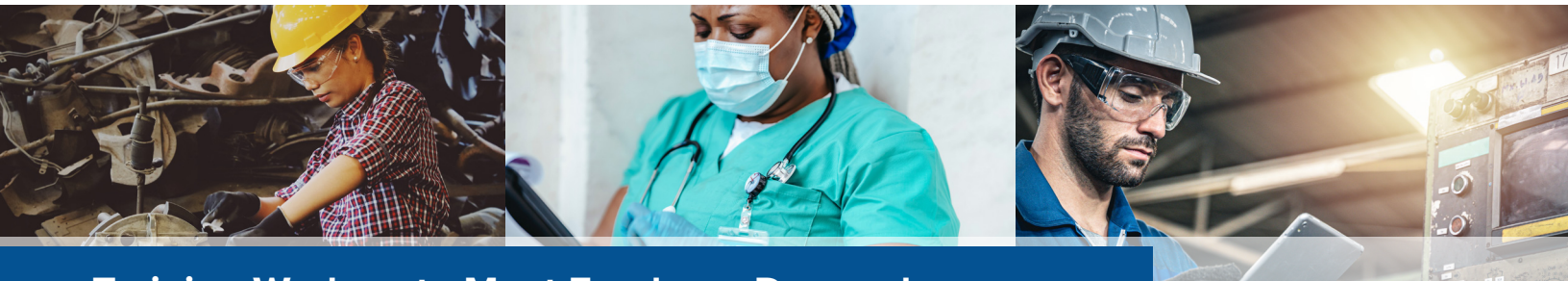
# NC WORKFORCE CREDENTIALS

Businesses value skill sets and credentials that assist in identifying qualified workers, upskilling their current workforce, and helping them better compete in the marketplace.

Education and training beyond high school increases jobseekers' ability to attain family-supporting wages in today's economy. In North Carolina, the fastest-growing jobs require a postsecondary degree or non-degree credential.



Source: NC Commerce LEED



## Training Workers to Meet Employer Demand

North Carolina Workforce Credentials is a collaborative effort to identify industry-valued, non-degree credentials that help workers in North Carolina obtain in-demand, living wage jobs. **While Foundational credentials are an initial stepping stone, Essential or Career credentials put you on a pathway to a higher-wage career.**

## CREDENTIAL CATEGORIES

### Foundational Credentials

Credentials demonstrating standard or baseline skillsets

Examples: Safety, Soft Skills, ServSafe

### Essential Credentials

Credentials with Pathways leading to sustainable-wage careers

Examples: Vet Tech, Nurse Aide I, Pharmacy Technician, Construction Labor

### Career Credentials

Credentials supporting sustainable-wage careers

Examples: CDL, Law Enforcement, Lineworker, HVAC Technicians

### Advanced Credentials

Credentials supporting career progression

Examples: Marine Welding, Certified Cisco Network Professional, Computed Tomography

## NC WORKFORCE CREDENTIALS

You can earn Essential or Career credentials for high-demand industries through North Carolina Community Colleges and other training partners—or sometimes even in high school. Many can be attained in as short as six weeks to three months.

To see a full list of NC Workforce Credentials and to learn how to submit others for consideration, go to [nccareers.org/credentials](http://nccareers.org/credentials).

### Questions?

Contact Cynthia Liston at [ncworkforcecredentials@myfuturenc.org](mailto:ncworkforcecredentials@myfuturenc.org)